

TippingPoint Security Management System (SMS)

IPS-Secured Networks

DATASHEET – SMS



TippingPoint delivers best-of-breed management capabilities that are simple to use and extremely powerful. The TippingPoint Security Management System (SMS) is a hardened appliance that provides global vision and control for multiple TippingPoint Intrusion Prevention Systems (IPS). The SMS is responsible for discovering, monitoring, configuring, diagnosing, remediation and reporting for multiple TippingPoint IPS systems.

Features and Benefits

- Enterprise-wide reporting and trend analysis
- At-a-glance dashboard
- Device configuration and monitoring
- Automatic reporting
- Policy driven management
- Digital Vaccine® management
- Event management and review
- Automated event response for enforcement and remediation
- User account and access management

The TippingPoint SMS is a rack mountable appliance that features a state-of-the-art secure Java client interface that enables “big picture” analysis with trending reports, correlation and real-time graphs on traffic statistics, filtered attacks, network hosts and services, and TippingPoint IPS inventory and health.

Because the TippingPoint SMS provides a scalable, policy-based operational model, it enables straightforward management of large-scale IPS deployments. A typical network-wide TippingPoint deployment consists of SMS Clients (secure Java), a centralized Security Management System (SMS), and multiple TippingPoint systems.

A very effective component of the TippingPoint SMS is the SMS dashboard. The dashboard provides at-a-glance monitors and launch capabilities into targeted management applications. The SMS dashboard displays an overview of current performance for all

TippingPoint systems in the network, including notifications of updates and potential problems that may need attention.

Automated Event Actions

Included with the TippingPoint SMS is an automated response system called Quarantine Protection that allows users to specify an action in response to a security event. This can range from directing a user to a self-remediation site, to generating a trouble ticket, or if the event is severe enough, moving them to a secure VLAN or removal from the network.

Advanced Policy Definition

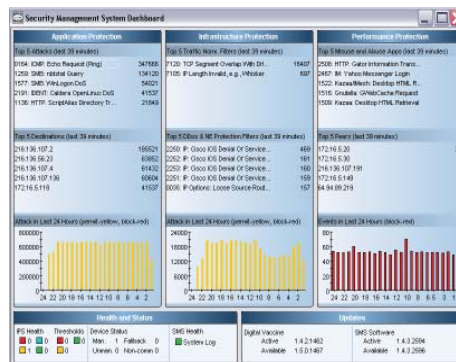
The TippingPoint SMS provides the ability to generate and deploy numerous policies to multiple TippingPoint systems through an intuitive policy management user interface. Policies can be defined based on segment, VLAN, IP range and direction.

Device Configuration and Monitoring

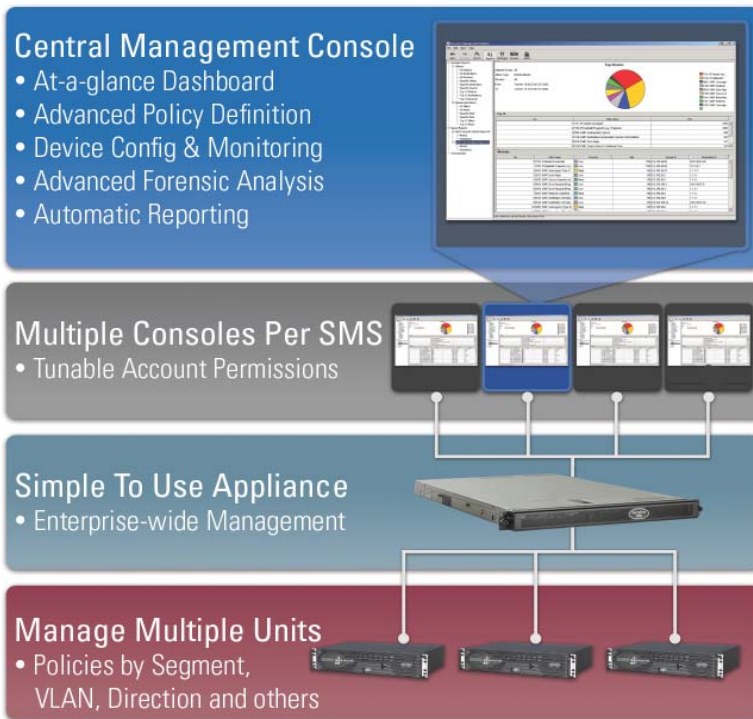
Scalable device management by the TippingPoint SMS provides centralized control over multiple TippingPoint systems. Network parameters as well as TippingPoint system and filter behaviors can be viewed, assessed and tuned from one interface

Advanced Forensic Analysis

The global vision of the SMS allows for the continuous analysis of system logs and network management information for immediate cyber



TippingPoint



attack containment, perpetrator location and identification, and damage mitigation.

Automatic Reporting

When TippingPoint detects and manages malicious attacks and network usage, event data automatically logs to system files in the SMS. Several reporting options are available regarding the compiled and stored log information

Bandwidth Management

In addition to protecting networks from cyber attacks, TippingPoint also ensures network availability for mission critical applications. Rogue applications, such as instant messaging and peer-to-peer file sharing, can consume all available network bandwidth and interfere with mission-critical applications. The TippingPoint SMS can easily track traffic associated with rogue applications and block or rate-limit the malicious traffic, ensuring that mission-critical applications have adequate bandwidth.

Digital Vaccine® Distribution

TippingPoint's Threat Management Center (TMC) constantly researches and distributes filter updates through Digital Vaccine packages to protect systems against new malicious threats to networks. The SMS can be configured to automatically check for, download and distribute filter updates to the TippingPoint systems.

Systems Management Integration

The TippingPoint SMS is the network solution component of an organization's management infrastructure. The SMS will integrate with systems such as HP Openview and other enterprise system's management tools. With the SMS, blocked attacks, quarantine actions and security configuration updates can all be tracked and reported as events of interest.

Hardware Specifications

SMS

- Form Factor: 1U
- CPU: Single 3Ghz Dual Core Xeon Processor
1333 Mhz front side bus
- 2 GB RAM
- (1) 73 MB 15K SAS HDD
- Hot-Swappable Redundant Power Supplies

SMS-FT (Fault Tolerant)

- Form Factor: 1U
- CPU: Single 3Ghz Dual Core Xeon Processor
1333 Mhz front side bus
- 2 GB RAM
- (2) 73 MB 15K SAS HDD
- RAID Controller
- Hot-Swappable Redundant Power Supplies

Power

- AC power supply (per power supply)
- Wattage: 550 W Hot Plug Redundant Power
- Voltage: 84 -264 VAC, auto ranging, 47-63 Hz, 7.6 A
- Heat dissipation: 2130 BTU/hr (theoretical maximum)
- Maximum inrush current: Under typical line conditions and over the entire system ambient operating range, the inrush current may reach 25 A per power supply for 10 ms or less.

Physical Dimensions

Height (in): 1.69 in	Height (cm): 4.29 cm
Width (in): 19.0 in	Width (cm): 48.26 cm
Depth (in): 30.0 in	Depth (cm): 76.2 cm
Weight (lb): 39 lbs	Weight (kg): 17.69 kg

Environmental

Temperature

- Operating :10° to 35°C (50° to 95°F)
- Storage: -40° to 65°C (-40° to 149°F)

Relative Humidity

- Operating: 8% to 85% (non-condensing) - maximum humidity gradation of 10% per hour
- Storage: 5% to 95% (non-condensing)

Corporate Headquarters:

7501B North Capital of Texas Hwy.
Austin, Texas 78731 USA
+1 512 681 8000
+1 888 TRUE IPS

European Headquarters:

World Trade Centre Amsterdam
Zuidplein 36, H-Toren
1077XV Amsterdam
The Netherlands
+31 20 799 7629

Asia Pacific Headquarters:

30, Cecil Street, #18-01
Prudential Tower
Singapore 049712
+65 6213 5999