



# Intelligent Application Switching Solutions End-to-End Connectivity



**Radware Connectivity Solution enables uninterrupted and cost effective multi-homing from central headquarters to remote branch offices. Radware LinkProof Family ensures full link availability, clean link security and optimized utilization of all connections, accelerating distributed application performance while dramatically cutting end-to-end connectivity costs.**

## **Why is Radware Needed for End-to-End Connectivity?**

Reliable connectivity between enterprise headquarters and remote branch offices is essential for the continuous and effective operation of mission critical applications, including CRM, ERP, Intranet and distributed databases. Link failures, security breaches and service overloads translate into failed transactions and denied user access undermining the productivity of distributed applications. The challenge is to manage, optimize and secure end-to-end link traffic from headquarters all the way to remote locations ensuring the continuity of applications while controlling connectivity costs.

Radware end-to-end connectivity solutions enable 24/7 link availability, clear link security and optimized link utilization across all ISPs. Delivering full link fault tolerance and optimization across all high speed and low cost links, Radware affords complete flexibility in selecting connectivity for headquarter and branch offices, cutting service costs while ensuring the complete continuity of mission critical applications.

Radware LinkProof and LinkProof Branch let you choose the connectivity performance and cost you need at every point across your enterprise.

## **How Does Radware End-to-End Connectivity Work?**

### **1. E2E Link Availability**

SynApps Health Monitoring checks all link operations across enterprise locations from headquarters to branch offices, detecting failures and redirecting traffic to the highest performing links for 24/7 connectivity and complete availability of distributed applications ensuring end-to-end business continuity.

### **2. Cut Connectivity Costs Across All Links**

Radware end-to-end connectivity solutions afford complete flexibility for the use of any link including leased T1/E1 lines, broadband, xDSL, Frame Relay/MPLS across all enterprise locations based on cost, traffic capacity and connectivity requirements.

By handling link traffic at all speeds from 5 Mbps to 3 Gbps Radware greatly reduces the cost of operating, deploying and scaling communications across headquarters and branch offices:

- Headquarter leased lines may be based on any combination of Frame Relay, MPLS, Tier1 or more economical lower tier or broadband connectivity options.
- Branch offices may deploy any combination of broadband/leased lines.

### **3. Accelerated Operation of Distributed IP Applications Across All Links**

SynApps dynamically load balances all traffic, optimizing bandwidth utilization across end-to-end enterprise links to accelerate the performance of distributed applications including mail, video, ERP, CRM and web databases all the way from headquarters to branch offices.

### **4. Guaranteed Service Levels and Costs Effective Bandwidth Utilization**

SynApps end-to-end Bandwidth Management moderates bandwidth allocations across all links for prioritized application performance, ensuring bandwidth for mission critical applications at all remote locations. By enforcing bandwidth policies by price, volume and traffic type Radware affords complete connectivity price control across ISPs, utilizing the least expensive links to cut ongoing service costs.

### **5. VPN Tunneling for Reliable and Cost Effective Secured Communications Across All Branch Locations**

VPN tunneling across multiple ISPs enables optimized, reliable and accelerated private communications between branch offices and headquarters, ensuring economical VPN high availability for secure end-to-end communications.

## 6. Unlimited Connectivity Service Scaling

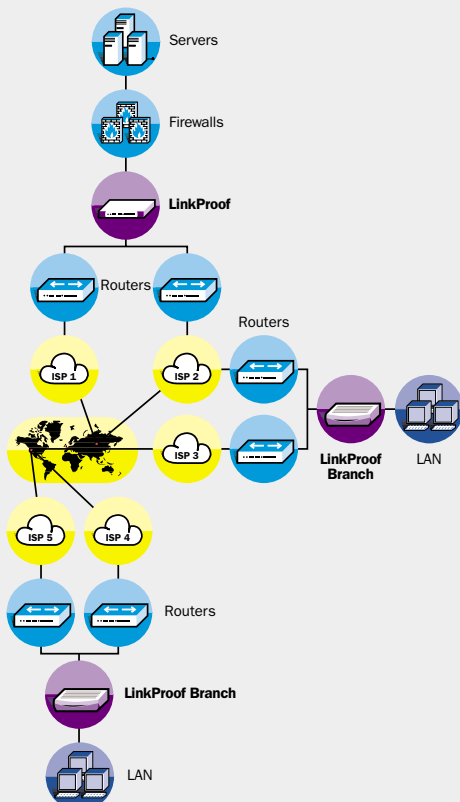
Radware scales link capacities across all enterprise links, handling up to 10 concurrent links at Gigabit speeds at headquarters to scale bandwidth and the number of connections, while enabling concurrent line usage at branch offices to utilize cross link bandwidth capacities to meet the growth in application capacity requirements.

## 7. Real-Time Application Level Security

Radware application level security continuously protects all entry points to enterprise networks, securing all headquarter and branch office resources from application attacks in real-time. SynApps Intrusion Prevention protects headquarters and branch offices against worms, viruses and over 1,300 attack signatures cleaning all links from security violations. SynApps DoS Protection identifies and blocks network attacks at Gigabit speeds protecting headquarters from debilitating Denial of Service.

## 8. Centralized Management of Unlimited Number of Branch Offices From Single, Unified Interface

Configware Insite provides full control and visibility of end-to-end link operations, providing simple and centralized configuration of an unlimited number of headquarter and branch office connections. Real-time and historical views of link performance let you identify service bottlenecks and failures across all remote locations for effective connectivity troubleshooting.



## How Does Radware Help You Cut End-to-End Connectivity Costs?

By optimizing link traffic and controlling bandwidth utilization across all links while enabling flexible connectivity architectures based on low and high cost links, Radware LinkProof Family dramatically cuts the cost of deploying, operating and scaling end-to-end connectivity:

### End-to-end link deployment and operation

Avg. yearly cost reduction by replacing leased lines with lower cost lines for 100 branch offices:

**\$960,000**

*(Replacing T1 links with 2 DSL lines saves an average \$9600 annually per branch office based on ATT US pricing).*

Avg. cost reduction by optimizing bandwidth utilization across 100 branch offices:

**50%**

*(E2E Link optimization and bandwidth management enable a two-fold increase in traffic capacity across the same bandwidth allotments cutting consumption up to 25%).*

Avg. capital expense of Radware end-to-end solution for 100 branches:

**\$450,000**

First year avg. annual operational savings

with Radware: **\$510,000**

Second year avg. annual operational savings

with Radware: **\$960,000**

### Eliminated Downtime and Link Failure Across the Enterprise

Radware eliminates the costly effects of WAN downtime and customer and productivity losses:

Avg. annual cost of ISP service degradation:

**\$1,400,000**

*(Source: WAN Downtime and SLAs, Infonetics Research for companies with at least 1000 employees and average annual revenue of \$1.7 billion)*

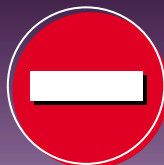
The above calculation is for illustration purposes only. Actual ROI must be calculated on a case-to-case basis by a professional consultant.



HEALTH  
MONITORING



TRAFFIC  
REDIRECTION



INTRUSION  
PREVENTION



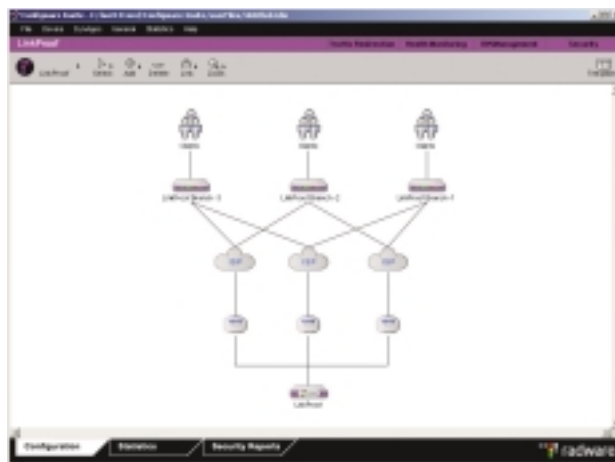
DENIAL OF SERVICE  
PROTECTION



BANDWIDTH  
MANAGEMENT

## Centralized Connectivity Performance Management

Configware Insite remote management software lets you set-up and centrally monitor all connections across an unlimited number of offices for simple and unified control of LinkProof Family device networking, SynApps services and connectivity performance statistics. When building an end-to-end connectivity architecture using LinkProof and LinkProof Branch, Configware Insite lets you simply connect and configure all headquarter and branch office links from a unified interface.



### LinkProof Keep Connected

LinkProof ensures 24/7 link availability, load balancing and end-to-end link optimization for reliable, high performing and price controlled enterprise multi-homing



### LinkProof Branch Remote Office Connectivity

LinkProof Branch provides fault tolerant, cost effective branch office connectivity and end-to-end optimized performance for the continuous reliability of mission critical applications from headquarters to remote offices