

P10: 10 Gigabit Ethernet Security Appliance

Inspect, monitor, and capture rules for line-rate 10 GbE networks

Open, flexible programmability

Predictable performance under all traffic conditions

Deterministic inspection with hardware-based rule processing

High Performance Traffic Inspection, Monitoring, and Capture at 10 Gbps

The Force10 P-Series 10 Gigabit inspection appliance is the first to deliver comprehensive deep packet inspection for line-rate 10 Gigabit per second applications. Based on patented Dynamic Parallel Inspection (DPI) technology, the P-Series uses an innovative, new processing architecture to simultaneously apply thousands of rules to each packet. Through the use of an FPGA-based rule engine, the P-Series can also dynamically reprogram hardware rules to deliver predictable performance and total signature flexibility under all traffic conditions.

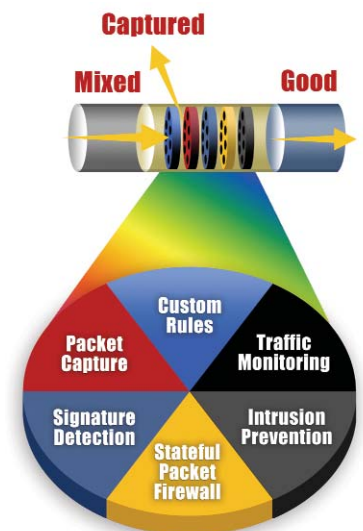
Using an open framework, the P-Series supports Open Source and customizable network monitoring applications, enabling users to specify capture and filtering policies from public domain signatures, standard network monitoring libraries, or user-defined custom rule bases.

Key P-Series Applications

- High speed programmable network probe delivers inspection and flexible capture rules for lawfully authorized electronic surveillance and CALEA applications
- 10 Gigabit stateful filtering applications
- Pre-processing and filtering capabilities to scale existing solutions to 10 Gigabit performance in the core or at the WAN edge
- Open application program interface for creating custom monitoring, packet capture, and network security applications

Key P-Series Features

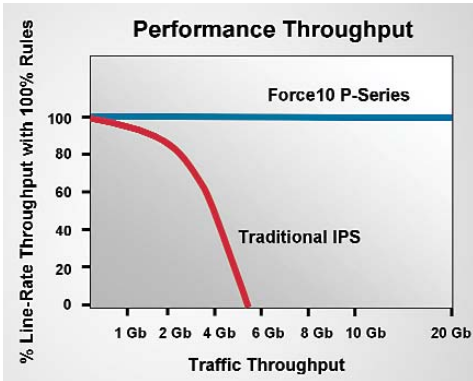
- Line-rate 10 Gbps deep packet inspection with support for jumbo frames and LAN or WAN PHY
- Predictable performance regardless of traffic conditions or number of rules
- Support for both active inline or passive monitor/capture deployments
- Dynamically write rules directly into hardware for greater flexibility in responding to malicious traffic



Force10 P-Series security filter



P-Series P10: 10 Gigabit Ethernet Security Appliance



Force10 P-Series predictable performance

Performance

The P-Series runs at full line-rate for 10 GbE network links with full deep-packet inspection and stateful signatures/policies enabled.

Predictable Performance

As a pure hardware-based inspection system, the P-Series is inherently 100% predictable in how operations are performed and always compiles a rule base that runs at line-rate. This leads to identical performance, throughput, and latency under any traffic load, and with any number of rules applied.

Management

Text-based rule management screen that enables users to:

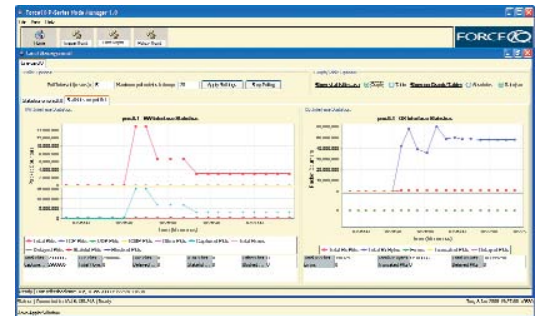
- Start and stop the interface; turn each rule on and off
- Manage runtime parameters such as packet truncation, flow length, and timeout
- Set capture/ignore and block/forward policies for each rule

Web-based Node Manager with support for:

- Rule and image management
- Traffic monitoring
- System status and health monitoring

Integration with Sguil, an Open Source network security monitoring and reporting system that provides the ability to:

- Collect, monitor, and correlate security events/alerts in the network
- Analyze security events based on context
- Categorize and escalate events for intrusion response decisionse



Monitoring statistics with the P-Series Node Manager

Specifications: P-Series P10

Ordering Information

| ORDER NO. | DESCRIPTION |
|------------|---|
| PB-10GE-2P | P10 2-port 10 GbE inspection and monitoring appliance with two 10 GbE XFP sensing and two GbE SFP mirroring ports |
| SW-P-SDK | P-Series security rules optimization software |



P10

| | |
|---------------------------------|---|
| Interfaces | Two line-rate 10 GbE XFP LAN/WAN PHY sensing ports Two line-rate GbE SFP mirroring ports |
| Inspection Throughput | 20 Gbps from 64 Byte to 9,000+ byte frames per system |
| Inspection Rate | 14,880,952 pps per port |
| Latency | < 2 microseconds |
| Number of Flows | 8,000,000 per system |
| Capture Rate | 1,000,000 pps per system |
| Full Header, Payload Inspection | IPv4 |
| Power | 100 - 240 VAC |
| Management | 2 10/100Base-T management ports 1 RJ45 console port |
| Height | 1 rack unit |



Force10 Networks, Inc.
350 Holger Way
San Jose, CA 95134 USA
www.force10networks.com

408-571-3500 PHONE
408-571-3550 FACSIMILE

© 2008 Force10 Networks, Inc. All rights reserved. Force10 Networks and E-Series are registered trademarks, and Force10, the Force10 logo, Reliable Business Networking, Force10 Reliable Networking, C-Series, EtherScale, FlexMedia, FTOS, Hot Lock, PowerSmart, P-Series, S-Series, SFTOS, StarSupport, TeraScale, VirtualScale, and VirtualView are trademarks of Force10 Networks, Inc. All other company names are trademarks of their respective holders. Information in this document is subject to change without notice. Certain features may not yet be generally available. Force10 Networks, Inc. assumes no responsibility for any errors that may appear in this document.

PS02

808 v2.9